

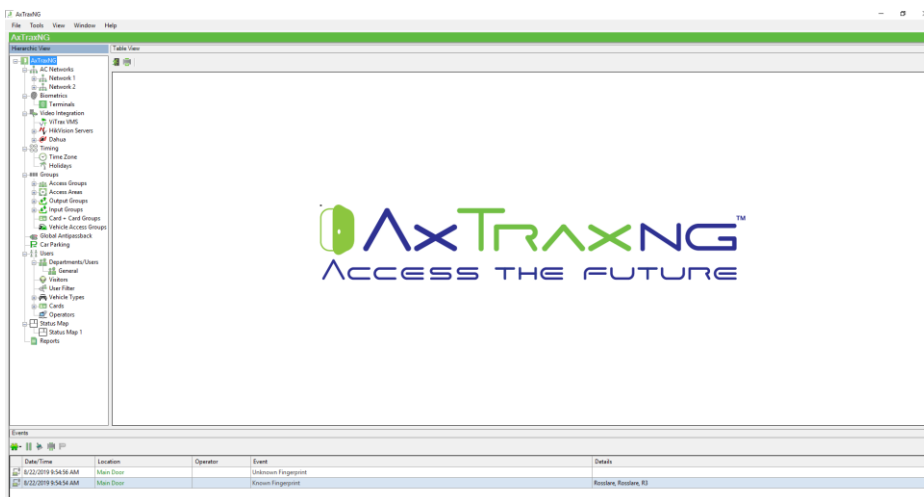
System Release Notes

1. General

- Product Name: AxTraxNG™ Server / AxTraxNG™ Client
- Release Software Version Number: 27.7.1.9: Full Release Version (This Version to be shipped with all future product shipments)
- Date of Release: 19th January 2020

The installer file, datasheet and manual for this version are available from the downloads section of the Rosslare web site.

- Previous Software Release Version Number: 27.7.0.8 (27/08/2019)
- Product Summary: Setup includes AxTraxNG™ Server/Client and AxTraxNG™ Server Monitor, Rosslare ViTrax™, AxTime™ and prerequisite redistributables



Release Overview

Following the previous release of AxTraxNG V 27.7.0.8 (27/08/2019), this release of AxTraxNG V 27.7.1.9 is the newest major release version of the V 27.7.x.x and aligns all of the latest Bug fixes, and system optimization of all major cases encountered in 2019. This optimized system has undergone automated testing, and live site optimization in systems with 100's of control panels.

Here is the overview of the release:

If you were requested to install a patch by Rosslare's Technical Support Group for the previous version, this release will include these within installation package.

In addition this version has resolved multiple bugs and issues that were reported in the previous version.

Supported Hardware Products:

“825-Panel”

AC-825IP (Networked Control Panel built into ME-1515 Enclosure)
AC-825IP-PCBA (Control Panel Only)
R-805 - (16 Relay Output Expansion for AC-825IP)
S-805 - (8 Sensor Input Expansion for AC-825IP)
D-805 - (4 Reader door Interface Expansion for AC-825IP)
P-805 - (16 Inputs, 8 Relay Output Expansion for AC-825IP)

“A-Panels” (Rosslare Legacy Networked Access Controllers)

AC-215, AC-215IP
AC-225, AC-225IP - (MD-D02, MD-IO84 Expansions for AC-225x)
AC-425, AC-425IP - (MD-D04, MD-IO84 Expansions for AC-425x)

“B-Panels”

AC-215-B - (RS-485 Bus Panel built into ME-1015 Enclosure)
AC-215IP-B - (Networked Panel built into ME-1015 Enclosure)
AC-215-DIN - (RS-485 Bus Panel DIN Cover – No Enclosure)
AC-215IP-DIN - (Networked Panel DIN Cover – No Enclosure)

AC-225-B - (RS-485 Bus Panel built into ME-1015 Enclosure)
AC-225IP-B - (Networked Panel built into ME-1015 Enclosure)
AC-225-DIN - (RS-485 Bus Panel DIN Cover – No Enclosure)
AC-225IP-DIN - (Networked Panel DIN Cover – No Enclosure)
MD-D02B (2-Reader 4 Input 4 output Expansion for AC-225xB)
MD-IO84B (8 Input 4 Output Expansion for AC-225xB)

AC-425-B - (RS-485 Bus Panel built into ME-1015 Enclosure)
AC-425IP-B - (Networked Panel built into ME-1015 Enclosure)
AC-425-DIN - (RS-485 Bus Panel DIN Cover – No Enclosure)
AC-425IP-DIN - (Networked Panel DIN Cover – No Enclosure)
MD-D04B (4-Reader 4 Input 4 output Expansion for AC-425xB)
MD-IO84B (8 Input 4 Output Expansion for AC-425xB)

RosslareBio 8000 Series Fingerprint Terminals

AY-B8520: Indoor networked optical fingerprint with 125 KHz (EM) RFID card reader
AY-B8550: Indoor networked optical fingerprint with 13.56 MHz (MIFARE) RFID card reader
AY-B8620: Outdoor networked optical fingerprint with 125 KHz (EM) RFID card reader
AY-B8650: Outdoor networked optical fingerprint with 13.56 MHz (MIFARE) RFID card reader
DR-B8000: USB 2.0 fingerprint enrollment scanner and desktop reader

Rosslare UHF-SMART series DR-U955BT USB Enrollment Station

DR-U955BT: Desktop enrollment station for UHF, BLE-ID and 13.56 MHz CSN

RosslareBio 9000 Series Fingerprint Terminals

AY-B9120BT: Outdoor networked optical fingerprint with 125 KHz (EM) RFID card reader
AY-B9150BT: Outdoor networked optical fingerprint with 13.56 MHz (MIFARE) RFID card reader
AY-B9250BT: Outdoor networked optical fingerprint with 13.56 MHz (MIFARE) RFID card reader + LCD + 4 touch buttons and camera
AY-B9350: Indoor networked optical fingerprint with Face recognition + EM (125KHz) and MIFARE (13.56 MHz) card reader
DR-B9000: USB 2.0 fingerprint enrollment scanner and desktop reader

System Release Notes

2. List of Documentation – Manuals

Here is the list of the NEW documents that are available with this release.

(Previously released products documents are not included in the release notes)

All the documents have been uploaded are available from our partner downloads site.

Product Manuals

- AxTraxNG™ 27.7.1.x Software Installation and User Manual Version 301219
 - The manual is updated with 2 step Fingerprint enrolment from DR-B8000 and DR-B9000.

3. Summary of Major Features / Functionality Added

- Dual step Fingerprint enrollment process via FP Biometric Desktop readers (DR-B9000 & DR-B8000)
- Operator password encrypted
- Operator Automatic logout from AxTraxNG client option
- Support SQL 2017
- "User Dual Authentication" supports up to 30 readers per AC-825IP Network

4. Issues Resolved – since previous release V 27.7.0.8

- AC-825IP Reader mode changed
- AC-825IP Interlock group doesn't work on 825+piggyback
- AC-Panels - reset due to communication reset locks the doors
- AC-Panels - Loosing Expansion boards without any reason
- AC-Panels - can't enter valid pin code after in-valid pin code for ~4sec
- Server stops get messages from Control panel when message counter becomes 20,000
- ViTrax - no license plate data arrives after server reset
- Wrong event description
- OSDP D-805 does not send Wiegand data after upgrade to version 3.54
- Improved Biometric events filtering
- Upgrade failed when database name is not AxTrax1
- Failed to upgrade large scale DB
- Cannot set user "Valid date" time "until" to 12:00
- Cannot issue reports older than one year

5. Known Issues

- License Support 32 Biometric terminals (License can be extended)
- In case of both 8000 and 9000 biometric series are at the same site, users need to enroll on both 8000 and 9000 devices within the same 10-finger GUI
- AY-B9150BT and AY-B9250BT supports MIFARE 13.56 MHz 4 UID cards
- ViTrax™ pop up video stream might show few seconds of delay before displaying
- Snapshot pop-up does not show from some cameras connected to ViTrax
- 9000 biometric series liveness check has slow response
- Cannot enroll Fingerprint from Bio 9000 devices while it was set to Live Fingerprint Detection.
- Wrong Fingerprint ID sent to Control Panel using Wiegand 34-bit

6. Miscellaneous

- It is very important to make sure that the Boot Loaders that are in the control panels and expansions are matched with the version of the control panels so that the firmware update process will be successful.
- Boot Loaders for the control panels and expansions – are not public information for this release note and are only known by Global Tech Support Group (TSG) and Rosslare Manufacturing teams.

7. Languages Supported.

- Arabic
- Chinese, Simplified
- Dutch
- English
- French
- Greek
- Hebrew
- Italian
- Japanese
- Portuguese
- Russian
- Serbian
- Slovenian
- Spanish
- Swedish
- Turkish
- Bulgarian

8. Firmware Versions for 27.7.1.9

Software Version	Panel Model	Firmware Ver
AextraxNG V27.7.1.9	AC825	AC825v02.09.16.hex
	D805	x805v03.54.hex
	P805	x805v03.54.hex
	S805	x805v03.54.hex
	R805	x805v03.54.hex
	AC425B	ac425v05_01_24
	MDD04B+AC425B	mdd04v02_00(RevB)
	AC425A	ac425v05_01_24
	MDD04A+AC425A	mdd04v00_04
	AC225B	ac225v05_01_24
	MDD02B+AC225B	mdd02v02_00(RevB)
	MDIO84B+AC225B	md-io84v02_00(RevB)
	AC225A	ac225v05_01_24
	MDD02A+AC225A	mdd02v00_13
	MDIO84A+AC225A	io225v00-08
	AC215IPB/AC215B	ac215Bv05_01_24
	AC215IPA	ac215Bv05_01_24
AC215A	ac215v04_08_23	

BIO8000 V1.0.0.5	AY-B8520	V78 / 6.13
	AY-B8620	V78 / 6.13
	AY-B8550	V76 / 6.12
	AY-B8650	V76 / 6.12
	DR-B8000	2.02 / 2.12

BIO9000 V 2.1.7.8	AY-B9120BT	2_003_63
	AY-B9150BT	2_003_63
	AY-B9250BT	1019_36
	AY-B9350BT	1.56-011.15
	DR-B9000	

Desktop Reader	DR-U955BT	DR-U995-V_01_06
----------------	-----------	-----------------

- Compatible ViTrax version – Product version 2.5.8, Module version 2.5.8
- Hikvision SDK version - 5.3.2.15
- Dahua SDK version 3.4.8.27787
- Compatible Rosslare ViTrax™ LPR – 1.9.1
- Compatible Rosslare AxTime™ software version 27.0.0.1 (Beta)
- Hikvision_DS-2CD4A26FWD-IZS_FW_v5.4.5
- LPR camera supported: Hikvision_DS-2CD4A26FWD-IZS **FW_v5.4.5**

9. Supported Microsoft Windows OS + Minimum Requirements

- Windows 7
- Windows 8
- Windows 10
- Windows Server: 2016 and 2019

Minimum PC Requirements

Intel i5 or equivalent
 500 GB Hard Disk Space
 4 GB Ram
 10/100 Ethernet Port
 Mouse
 Keyboard
 Display

Contact Information

United States and Canada

Rosslare Security Products, Inc.
Southlake, TX, USA
Toll Free: +1-866-632-1101
Local: +1-817-305-0006
Fax: +1-817-305-0069
support.na@rosslaresecurity.com

Europe

Rosslare Israel Ltd.
Rosh HaAyin, Israel
Tel: +972-3-938-6838
Fax: +972-3-938-6830
support.eu@rosslaresecurity.com

Latin America

Rosslare Latin America
Buenos Aires, Argentina
Tel: +54-11-4001-3104
support.la@rosslaresecurity.com

China

Rosslare Electronics (Shenzhen) Ltd.
Shenzhen, China
Tel: +86-755-8610-6842
Fax: +86-755-8610-6101
support.cn@rosslaresecurity.com

Asia Pacific, Middle East, Africa

Rosslare Enterprises Ltd.
Kowloon Bay, Hong Kong
Tel: +852-2795-5630
Fax: +852-2795-1508
support.apac@rosslaresecurity.com

India

Rosslare Electronics India Pvt Ltd.
Tel/Fax: +91-20-40147830
Mobile: +91-9975768824
sales.in@rosslaresecurity.com



• EN ISO 13485

