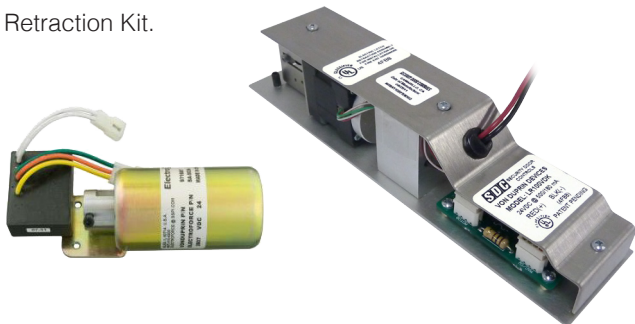
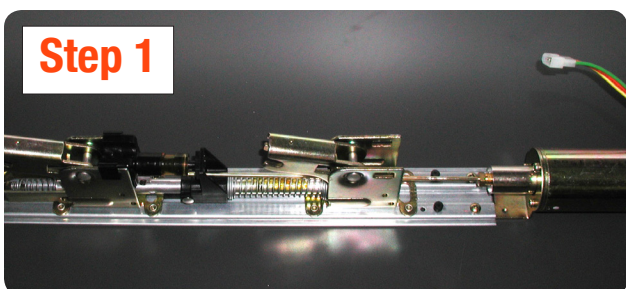


Von Duprin Solenoid Removal

Step by step procedure: How to remove a Von Duprin Solenoid and replace with SDC LR100VDK Latch Retraction Kit.

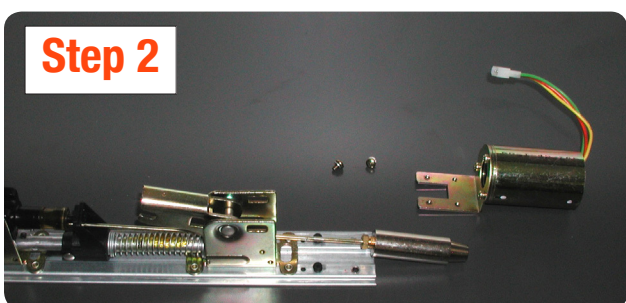


Step 1



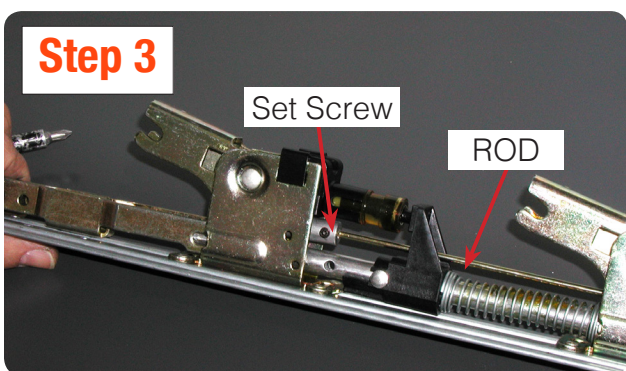
The device should be completely removed from the door, the rail and push pad in order to worked correctly and placed on a work bench or flat surface. As shown.

Step 2



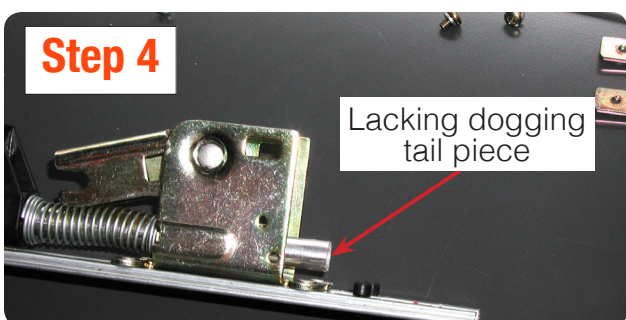
Remove the solenoid from the base rail by removing two Philip screws.

Step 3



Then turn the device on its side and unfasten the set screw in order to remove the rod. To remove the rod unscrew. (Suggest to use Pliers to remove). * Note: When removing the rod it may break off.

Step 4



The next step is to install the missing dogging tail piece. This part is included with the kit.



Step 5



Finally install dogging tail piece. For detail instructions on how to install please refer to instructions that were provided with the kit.

