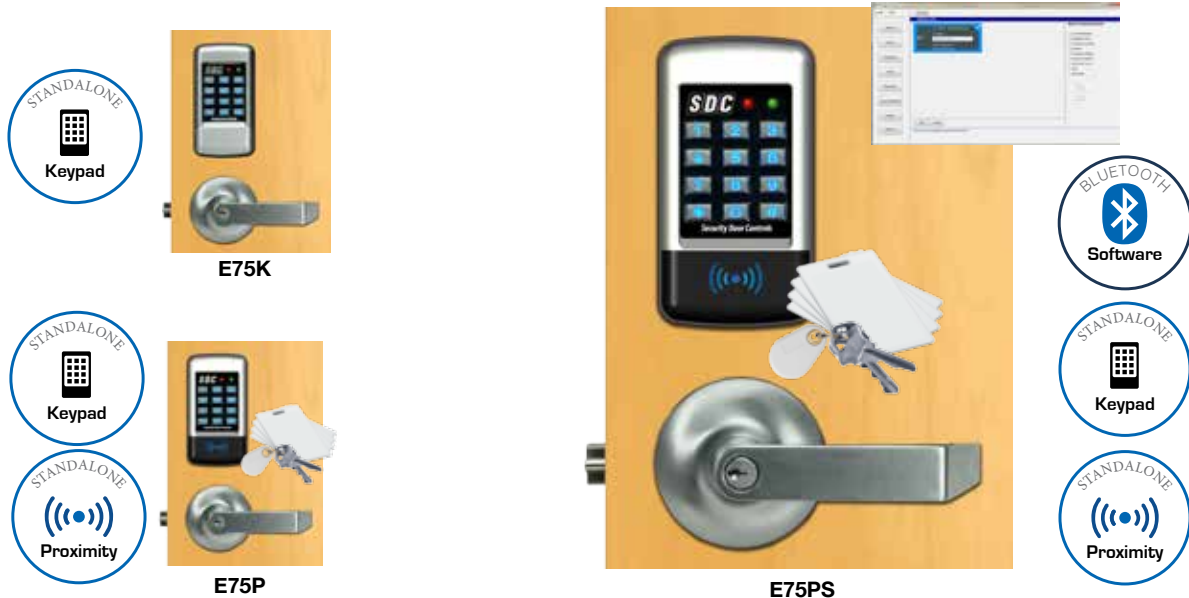


# EntryCheck® E75

## Standalone Electronic Locksets Series

The SDC EntryCheck® E75 is an indoor/outdoor standalone electronic battery powered solution, providing controlled access for basic and multi-level high security requirements. The E75PS locksets are keypad or PC software programmable, and combine multiple access technology with efficient motorized locksets.



### FEATURES

#### E75K and E75P:

- Keypad or PC Software Programmable
- 3,000 Users, 32 Temporary Users
- 4 to 6 Digit PIN Codes
- 3 Passage Mode Option
- 32 Access Groups, Schedules
- 32 Holidays
- 4 Authority Levels
- Keypad Tamper Lockout
- Mechanical Key Override
- Battery Powered (4AA)
- Blue Backlit Cast Metal Keys
- Weather & Vandal Resistant
- Retrofit Existing Lock Door Prep
- Motorized SDC Cylindrical Lockset
- Heavy Duty ANSI Grade 1
- Vandal Resistant Lever Clutch Mechanism

#### E75PS additional Features :

- Point-and-Click Microsoft PC-Based Software
- Supports Up to 1,000 Unique Doors
- Manage Individual Door Parameters, Access Schedules, User Groups, Holidays, Temporary Users
- Lock settings and related parameters are easily cloned to other locks, permitting quick multi-lock installations
- Data Import: All lock parameters and user data can easily be imported from existing databases, locks, or spreadsheets
- Database Backup Utility: Password protected SQL dbase may be saved on any PC
- Wireless Information Transfer: Lock programming and audit trail may be uploaded or downloaded using a Bluetooth enabled PC or laptop
- Audit Trail Information: Locks will maintain a record of the last 10,000 events to provide increased accountability. Audits may be downloaded to Excel spreadsheets where information is easily analyzed, sorted or printed
- User Entries Logged with Time and Date
- Remote Input Activation is Logged
- Door Forced/Door Ajar/Duress Alarms Are Logged
- User Reports: Users may be exported to Excel spreadsheets where information is easily sorted or printed

**E75PS**  
Includes Bluetooth enabled software!





## SPECIFICATIONS

<b>Power</b>	4 Size AA Batteries (Alkaline) 100,000 cycles or External 12VDC Power @ 30mA
<b>Inputs</b>	1 Request to Exit 1 Door Position Switch
<b>Output</b>	1 Aux Relay Contacts SPDT 1A @ 30VDC
<b>Temperature</b>	22°F to + 130°F (-30°C to + 54°C)
<b>Humidity</b>	5% to 95% non-condensing
<b>Keypad Finish</b>	Q 626 Dull Chrome - Standard B 693 Black
<b>Latch Bolt</b>	9/16" Throw
<b>Backset</b>	2-3/4"
<b>Strike</b>	4-7/8" ANSI A115.2
<b>Door Thickness</b>	1-3/4" to 2-1/8"

### PC Requirements

<b>Supported Operating Systems</b>	Windows 7/8, 10 (32-Bit and 64-Bit Systems)
<b>Processor</b>	2GHz or Faster Recommended
<b>RAM</b>	2GB or More Recommended
<b>Hard Disk Space</b>	1GB or More Recommended
<b>Required</b>	Windows Administrative Rights

PRODUCT SKU SAMPLE: E75P Q E1 Q



## HOW TO ORDER

### ENTRYCHECK™ E75 LOCKSET - SDC LOCK

#### 1| SPECIFY MODEL

- E75K** Digital Keypad Only
- E75P** Digital Keypad with Prox Reader
- E75PS** Digital Keypad with Prox Reader and Software

#### 2| SPECIFY KEYPAD FINISH

- Q** 626 Dull Chrome (Standard)
- B** Black

#### 3| SPECIFY LEVER HANDLE

- G1** Galaxy
- G5** Galaxy I-Core Prep
- E1** Eclipse
- E5** Eclipse I-Core Prep



**G1** Galaxy



**E1** Eclipse



**G5** Galaxy, I-Core



**E5** Eclipse, I-Core

#### 4| SPECIFY LEVER FINISH

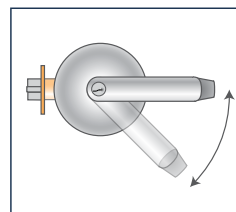
- Q** 626 Dull Chrome (Standard)
- P** 625 Polished Chrome
- C** 605 Polished Brass



## ACCESSORIES

### PROX CARDS AND KEY FOBS

- HID1326-25** Proximity Card , 25 Cards
- HID1326-100** Proximity Card, 100 Cards
- HID1346-10** Proximity Key Fob, 10 Key Fobs
- HID1346-100** Proximity Key Fob, 100 Key Fobs
- PTAG-10** Proximity Disc Tag, 10 Tags
- PTAG-25** Proximity Disc Tag, 25 Tags



When locked, the built-in clutch permits the handles to operate without retracting the latch, reducing potential for damage.

# EntryCheck™ E75 Schlage

## Standalone Electronic Locksets



E75 SCHLAGE can be retrofitted to existing prep for cylindrical locks. Distributor supplied lock, or motorized SCHLAGE lock with Athens trim and Dull Chrome finish supplied by SDC..

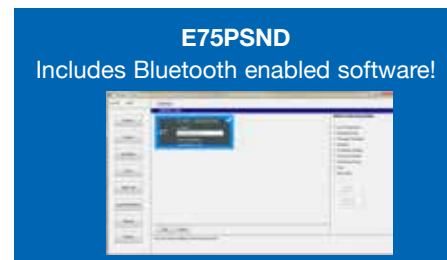
### FEATURES

#### E75KND and E75PND:

- Keypad or PC Software Programmable
- 3,000 Users, 32 Temporary Users
- 4 to 6 Digit PIN Codes
- 3 Passage Mode Option
- 32 Access Groups, Schedules
- 32 Holidays
- 4 Authority Levels
- Keypad Tamper Lockout
- Mechanical Key Override
- Battery Powered (4AA)
- Blue Backlit Cast Metal Keys
- Weather & Vandal Resistant
- Retrofit Existing Lock Door Prep
- SCHLAGE Cylindrical Lockset (ND80PD) (Distributor Supplied or Supplied by SDC)

#### E75PSND additional Features :

- Point-and-Click Microsoft PC-Based Software
- Supports Up to 1,000 Unique Doors
- Manage Individual Door Parameters, Access Schedules, User Groups, Holidays, Temporary Users
- Lock settings and related parameters are easily cloned to other locks, permitting quick multi-lock installations
- Data Import: All lock parameters and user data can easily be imported from existing databases, locks, or spreadsheets
- Database Backup Utility: Password protected SQL dbase may be saved on any PC
- Wireless Information Transfer: Lock programming and audit trail may be uploaded or downloaded using a Bluetooth enabled PC or laptop
- Audit Trail Information: Locks will maintain a record of the last 10,000 events to provide increased accountability. Audits may be downloaded to Excel spreadsheets where information is easily analyzed, sorted or printed
- User Entries Logged with Time and Date
- Remote Input Activation is Logged
- Door Forced/Door Ajar/Duress Alarms Are Logged
- User Reports: Users may be exported to Excel spreadsheets where information is easily sorted or printed





## SPECIFICATIONS

<b>Power</b>	4 Size AA Batteries (Alkaline) 100,000 cycles or External 12VDC Power @ 30mA
<b>Inputs</b>	1 Request to Exit 1 Door Position Switch
<b>Output</b>	1 Aux Relay Contacts SPDT 1A @ 30VDC
<b>Temperature</b>	22°F to + 130°F (-30°C to + 54°C)
<b>Humidity</b>	5% to 95% non-condensing
<b>Keypad Finish</b>	Q 626 Dull Chrome - Standard B 693 Black
<b>Latch Bolt</b>	9/16" Throw
<b>Backset</b>	2-3/4"
<b>Strike</b>	4-7/8" ANSI A115.2
<b>Door Thickness</b>	1-3/4" to 2-1/8"

### PC Requirements

<b>Supported Operating Systems</b>	Windows 7/8, 10 (32-Bit and 64-Bit Systems)
<b>Processor</b>	2GHz or Faster Recommended
<b>RAM</b>	2GB or More Recommended
<b>Hard Disk Space</b>	1GB or More Recommended
<b>Required</b>	Windows Administrative Rights

PRODUCT SKU SAMPLE: **E75P Q NDATHQ**



## HOW TO ORDER

### ENTRYCHECK™ E75 LOCKSET - SCHLAGE LOCK

#### 1| SPECIFY MODEL

- E75K** Digital Keypad less Schlage Lockset
- E75P** Digital Keypad with Prox Reader less Schlage Lockset
- E75PS** Digital Keypad with Prox Reader & Software less Schlage Lockset

#### 2| SPECIFY KEYPAD FINISH

- Q** 626 Dull Chrome (Standard)
- B** Black

#### 3| SPECIFY LOCKSET OPTION

- ND** Distributor Supplied Schlage Lock (ND80PD), SDC to Electrify Lock
- NDATHQ** Schlage Lock (ND80PD) Electrified, with Athens Trim (626 Finish) SDC provided



## ACCESSORIES

### PROX CARDS AND KEY FOBs



**HID1326-25** Proximity Card , 25 Cards

**HID1326-100** Proximity Card, 100 Cards



**HID1346-10** Proximity Key Fob, 10 Key Fobs

**HID1346-100** Proximity Key Fob, 100 Key Fobs

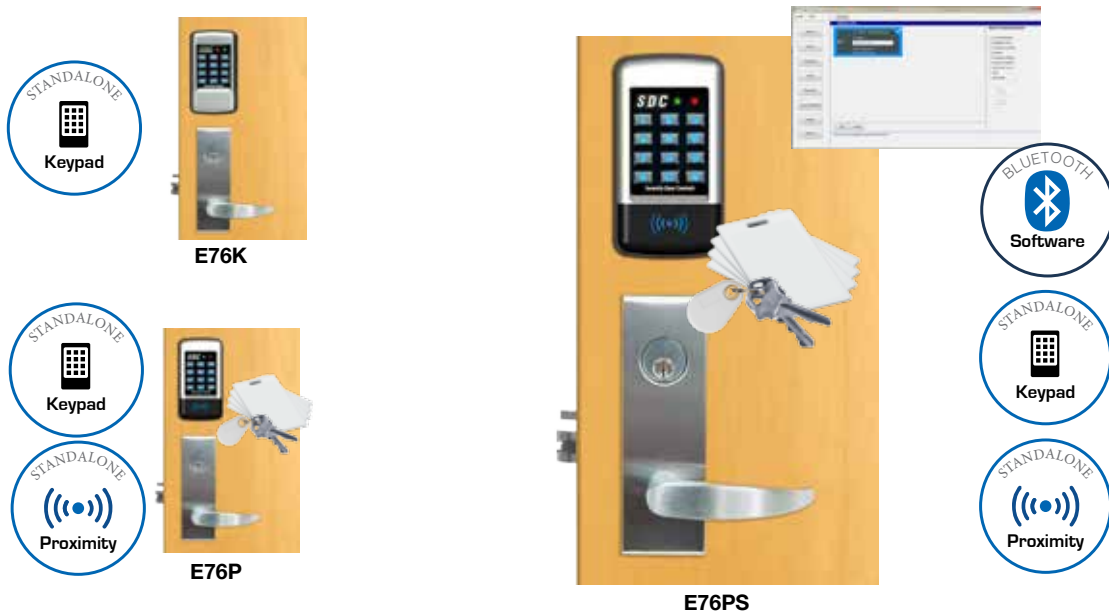
**PTAG-10** Proximity Disc Tag, 10 Tags

**PTAG-25** Proximity Disc Tag, 25 Tags



# EntryCheck® E76

## Standalone Electronic Mortise Locksets



The EntryCheck® E76 Series includes an SDC Mortise lock and is an indoor/outdoor standalone electronic battery powered solution, providing controlled access for basic and multi-level high security requirements. The E76 locksets are keypad or PC software programmable, and combine multiple access technology with efficient motorized locksets.

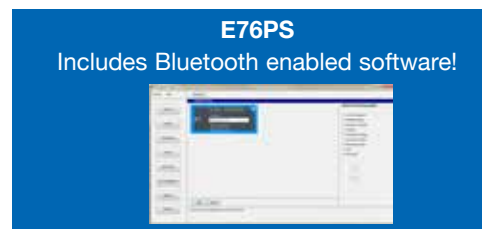
### FEATURES

#### E76K and E76P:

- Keypad or PC Software Programmable
- 3,000 Users, 32 Temporary Users
- 4 to 6 Digit PIN Codes
- 3 Passage Mode Option
- 32 Access Groups, Schedules
- 32 Holidays
- 4 Authority Levels
- Keypad Tamper Lockout
- Mechanical Key Override
- Battery Powered (4AA)
- Blue Backlit Cast Metal Keys
- Weather & Vandal Resistant
- Retrofit Existing Lock Door Prep
- Motorized SDC Mortise Lockset
- Heavy Duty ANSI Grade 1
- Vandal Resistant Lever Clutch Mechanism

#### E76PS additional Features :

- Point-and-Click Microsoft PC-Based Software
- Supports Up to 1,000 Unique Doors
- Manage Individual Door Parameters, Access Schedules, User Groups, Holidays, Temporary Users
- Lock settings and related parameters are easily cloned to other locks, permitting quick multi-lock installations
- Data Import: All lock parameters and user data can easily be imported from existing databases, locks, or spreadsheets
- Database Backup Utility: Password protected SQL dbase may be saved on any PC
- Wireless Information Transfer: Lock programming and audit trail may be uploaded or downloaded using a Bluetooth enabled PC or laptop
- Audit Trail Information: Locks will maintain a record of the last 10,000 events to provide increased accountability. Audits may be downloaded to Excel spreadsheets where information is easily analyzed, sorted or printed
- User Entries Logged with Time and Date
- Remote Input Activation is Logged
- Door Forced/Door Ajar/Duress Alarms Are Logged
- User Reports: Users may be exported to Excel spreadsheets where information is easily sorted or printed





## MORTISE LOCK FEATURES

- SDC Fully Featured Mortise Lockset with Complete Application Flexibility for New Construction or Retrofit of Major Brand Mechanical Locks
- New or Retrofit Application, Replaces Most Mechanical Locks
- Order with SDC Trim or Less Trim. Compatible with Schlage Trim Provided by Others.
- Key Latch Retraction
- ANSI Grade 1



## KEYPAD SPECIFICATIONS

<b>Power</b>	4 Size AA Batteries (Alkaline) 100,000 cycles or External 12VDC Power @ 30mA
<b>Inputs</b>	1 Request to Exit 1 Door Position Switch
<b>Output</b>	1 Aux Relay Contacts SPDT 1A @ 30VDC
<b>Temperature</b>	22°F to + 130°F (-30°C to + 54°C)
<b>Humidity</b>	5% to 95% non-condensing
<b>Keypad Finish</b>	Q 626 Dull Chrome - Standard B 693 Black
<b>Latch Bolt</b>	9/16" Throw
<b>Backset</b>	2-3/4"
<b>Strike</b>	4-7/8" ANSI A115.2
<b>Door Thickness</b>	1-3/4" to 2-1/8"

### PC Requirements

<b>Supported Operating Systems</b>	Windows 7/8, 10 (32-Bit and 64-Bit Systems)
<b>Processor</b>	2GHz or Faster Recommended
<b>RAM</b>	2GB or More Recommended
<b>Hard Disk Space</b>	1GB or More Recommended
<b>Required</b>	Windows Administrative Rights

PRODUCT SKU SAMPLE: E76P Q RR EE Q



## HOW TO ORDER

### ENTRYCHECK™ E76 SERIES

#### 1| SPECIFY MODEL

- E76K** Digital Keypad Only, with Mortise Lock
- E76P** Digital Keypad with Prox Reader, with Mortise Lock
- E76PS** Digital Keypad with Prox Reader and Software, with Mortise Lock

#### 2| SPECIFY KEYPAD FINISH

- Q** 626 Dull Chrome (Standard)
- B** Black

#### 3| SPECIFY HAND

- L** Left Hand
- R** Right Hand
- RR** Right Hand Reversed
- LR** Left Hand Reversed

#### 4| SPECIFY LOCK LEVER TRIM






#### 5| SPECIFY LOCK FINISH

- Q** 626 Dull Chrome (Standard)
- C** 605 Polished Brass
- P** 625 Bright Chrome



## ACCESSORIES

### PROX CARDS AND KEY FOBs

- HID1326-25** Proximity Card, 25 Cards 
- HID1326-100** Proximity Card, 100 Cards
- HID1346-10** Proximity Key Fob, 10 Key Fobs 
- HID1346-100** Proximity Key Fob, 100 Key Fobs
- PTAG-10** Proximity Disc Tag, 10 Tags 
- PTAG-25** Proximity Disc Tag, 25 Tags





# EntryCheck® E77

## Standalone Electronic Exit Device



The EntryCheck® E77 Series include an SDC rim exit device and trim. The E77 lockset are an indoor/outdoor standalone electronic battery powered solution, providing controlled access for basic and multi-level high security requirements. The E77 locksets are keypad or PC software programmable, and combine multiple access technology with efficient motorized exit devices.

### FEATURES

#### E77K and E77P:

- Keypad or PC Software Programmable
- 3,000 Users, 32 Temporary Users
- 4 to 6 Digit PIN Codes
- 3 Passage Mode Option
- 32 Access Groups, Schedules
- 32 Holidays
- 4 Authority Levels
- Keypad Tamper Lockout
- Mechanical Key Override
- Battery Powered (4AA)
- Blue Backlit Cast Metal Keys
- Weather & Vandal Resistant
- Retrofit Existing Lock Door Prep
- SDC S6100 Rim Exit Device
- Heavy Duty ANSI Grade 1

#### E77PS additional Features :

- Point-and-Click Microsoft PC-Based Software
- Supports Up to 1,000 Unique Doors
- Manage Individual Door Parameters, Access Schedules, User Groups, Holidays, Temporary Users
- Lock settings and related parameters are easily cloned to other locks, permitting quick multi-lock installations
- Data Import: All lock parameters and user data can easily be imported from existing databases, locks, or spreadsheets
- Database Backup Utility: Password protected SQL dbase may be saved on any PC
- Wireless Information Transfer: Lock programming and audit trail may be uploaded or downloaded using a Bluetooth enabled PC or laptop
- Audit Trail Information: Locks will maintain a record of the last 10,000 events to provide increased accountability. Audits may be downloaded to Excel spreadsheets where information is easily analyzed, sorted or printed
- User Entries Logged with Time and Date
- Remote Input Activation is Logged
- Door Forced/Door Ajar/Duress Alarms Are Logged
- User Reports: Users may be exported to Excel spreadsheets

**E77PS**  
Includes Bluetooth enabled software!





## EXIT DEVICE FEATURES

- The SDC S6000 Spectra™ series panic and fire rated exit devices are UL listed and ANSI A156.3 Grade 1 compliant and comply with all national and state building and fire life safety codes. The SDC Spectra series exit devices has a modern look and quiet push pad operation.



## EXIT DEVICE SPECIFICATIONS

<b>Device Head Cover</b>	Zinc Alloy or Stainless Steel
<b>Chassis</b>	Steel, Plated
<b>Housing</b>	Extruded Aluminum
<b>Push Bar Base</b>	Extruded Aluminum
<b>Touch Plate</b>	Stainless Steel
<b>Mounting</b>	Machine screws standard. Sex bolts optional. Order "SNB" for wood or non-reinforced metal doors
<b>End Cap</b>	Zinc Alloy
<b>Hand</b>	Non-Handed
<b>Dogging</b>	Allen-Type Key Furnished
<b>Finish</b>	630 Stainless Steel



## KEYPAD SPECIFICATIONS

<b>Power</b>	4 Size AA Batteries (Alkaline) 100,000 cycles or External 12VDC Power @ 30mA
<b>Inputs</b>	1 Request to Exit 1 Door Position Switch
<b>Output</b>	1 Aux Relay Contacts SPDT 1A @ 30VDC
<b>Temperature</b>	22°F to + 130°F (-30°C to + 54°C)
<b>Humidity</b>	5% to 95% non-condensing
<b>Latch Bolt</b>	9/16" Throw
<b>Backset</b>	2-3/4"
<b>Strike</b>	4-7/8" ANSI A115.2
<b>Door Thickness</b>	1-3/4" to 2-1/8"
<b>PC Requirements</b>	
<b>Supported Operating Systems</b>	Windows 7/8, 10 (32-Bit and 64-Bit Systems)
<b>Processor</b>	2GHz or Faster Recommended
<b>RAM</b>	2GB or More Recommended
<b>Hard Disk Space</b>	1GB or More Recommended
<b>Required</b>	Windows Administrative Rights



## HOW TO ORDER

### ENTRYCHECK™ E77 SERIES

#### 1| SPECIFY MODEL

- E77K** Digital Keypad Only, with SDC S6100 Exit Device
- E77P** Digital Keypad with Prox Reader, with SDC S6100 Exit Device
- E77PS** Digital Keypad with Prox Reader and Software, with SDC S6100 Exit Device

#### 2| SPECIFY KEYPAD FINISH

- Q** 626 Dull Chrome (Standard)
- B** Black

#### 3| SPECIFY ELECTRIC TRIM

- EK** Eclipse Style Electric Trim Less Mortise Cylinder, Stainless Steel Finish
- GK** Galaxy Style Electric Trim Less Mortise Cylinder



**EKM** Eclipse, Less Cylinder



**GKM** Galaxy Less Cylinder

#### 4| SPECIFY SPECTRA SERIES EXIT DEVICE

- M61** Rim Mount Exit Device



#### 5| SPECIFY PANIC OR FIRE RATED

- P** Panic Exit Device  
Mechanical Dogging STD. See Part # CD for Optional Key Cylinder Dogging
- F** Fire Exit Device  
Mechanical Dogging Not Available

#### 6| SPECIFY EXIT DEVICE FINISH

- U** 630 Dull Stainless Steel

#### 7| SPECIFY EXIT DEVICE LENGTH

- 36** For 36" Door N/C
- 42** For 42" Door
- 48** For 48" Door

