



DoorBird
Technology meets Design.



Installation Manual (Pages 2-27)

IP VIDEO DOOR STATION

D21x Series



Installationsanleitung (Seite 28-55)

IP VIDEO TÜRSTATION

D21x Serie

INSTALLATION MANUAL

Read these instructions carefully before starting to use any components. Keep the manual so you can refer to it at a later date if required. If you hand over the device to other persons for use, please hand over the operating manual as well.

You can always find the most up-to-date version of the installation manual on www.doorbird.com/support

To make things easier we use the term “device” for the product “IP Video Door Station” and “mobile device” for a smartphone or tablet.

Liability

Every care has been taken in the preparation of this document. Please inform Bird Home Automation GmbH of any inaccuracies or omissions. Bird Home Automation GmbH cannot be held responsible for any technical or typographical errors and reserves the right to make changes to the product and manuals without prior notice. Bird Home Automation GmbH makes no warranty of any kind with regard to the content of this document, including, but not limited to, the implied warranties of merchantability and fitness for a particular purpose. Bird Home Automation GmbH shall neither be liable nor responsible for incidental or consequential damages in connection with the furnishing, performance or use of this material. This product is only to be used for its intended purpose.

Equipment Modifications

This equipment must be installed and used in strict accordance with the instructions given in the user documentation. This equipment contains no components that require service by the user. Unauthorized equipment changes or modifications will invalidate all applicable regulatory certifications and approvals.

Symbols used



Danger: Indicates a hazardous situation which, if not avoided, will result in death or serious injury.



Warning: Indicates a hazardous situation which, if not avoided, could result in death or serious injury.



Caution: Indicates a hazardous situation which, if not avoided, could result in minor or moderate injury.



Notice: Indicates a situation which, if not avoided, could result in damage to property.



Important: Indicates significant information which is essential for the product to function correctly.



Note: Indicates useful information which helps in getting the most out of the product.

Hazard information



WARNING

- Mounting, installation and servicing work on electrical devices may only be performed by a qualified electrician. Failure to observe this regulation could result in the risk of serious damage to health or fatal injury due to electric shocks.
- Devices with 110-240 V connection: The device may only be connected to an easily accessible power socket outlet. The mains adapter must be pulled out if a hazard occurs.
- For power supply, only use the original plug-in mains adapter delivered with the device or a recommended PoE-Switch/PoE-Injector as specified in this manual.
- Because of electrostatic charging, direct contact with the circuit board can result in destruction of the device. Direct contact with the circuit board must therefore be avoided at any time.
- Observe the EN 60065 resp. EN 60950 resp. EN 62368 standard.
- Do not use the device if there are signs of damage to the housing, control elements or connecting sockets, for example, or if it demonstrates a malfunction. If you have any doubts, please have the device checked by an authorized expert.
- Do not open the device. This voids the warranty of the device. The device does not contain any parts that can be maintained by the user. In the event of an error, please have the device checked by an authorized expert.



WARNING

- For safety, approval and licensing reasons (CE/FCC/IC etc.), unauthorized change and/or modification of the device is not permitted.
- The device is not a toy; do not allow children to play with it. Do not leave packaging material lying around. Plastic films/bags, pieces of polystyrene, etc. can be dangerous in the hands of a child.
- Always lay cables in such a way that they do not become a risk to people and domestic animals.
- Voltage is applied to parts within the equipment. Do not touch any parts that are not associated with the installation, wiring, or connection. Electric shock could result.
- On devices which are not marked as weather-proof: Keep the device away from water or any other liquid.
- Do not install or make any wire terminations while power supply is plugged in. It can cause electric shock or damage to the device.
- Before turning on power, make sure wires are not crossed or shorted. If not, fire or electric shock could result.
- High voltage may be present internally. Do not open the device. Electric shock could result.
- The device is not of explosion-proof. Do not install or use near gases or flammable materials. Fire or explosion could result.
- Do not install two power supplies in parallel to a single input. Fire or damage to the device could result. Be sure to connect a single power supply to the device.
- Do not connect any terminal on the device to an AC power line. Fire or electric shock could result.
- Keep AC cord from being marred or crushed. If the AC cord is fractured, fire or electric shock could result.
- Do not plug or unplug with wet hands. Electric shock could result.

- Do not put any metal or flammable material into the device. Fire, electric shock, or device trouble could result.
- Existing wiring such as chime wiring, etc. may contain high voltage AC electricity. Damage to the device or electric shock could result. Wiring and installation must be done by a qualified electrician.
- When mounting the device on a wall or ceiling, install the device in a convenient location, but not where it could be jarred or bumped. Injury could result.
- On devices with ground terminals, connect to an earth ground. Otherwise fire or malfunction could result.
- On devices with plastic or real glass, do not put high pressure on the glass. If fractured, injury could result.
- On devices with LCD, if LCD is punctured, do not allow contact with the liquid crystal inside. Injury could result. If necessary, gargle your mouth and clean your eyes or skin with clear water for at least 15 minutes and consult your doctor.
- Do not put anything on the device or cover the device with cloth, silicone, glue, coating, separate covering etc. Fire or device issues could result.
- Do not install the device in any of the following locations. Fire, electric shock, or device trouble could result.
 - Places under direct sunlight or places near heating equipment that varies in temperature.
 - Places subject to dust, oil, chemicals, hydrogen sulfide (hot spring).
 - Places subject to moisture and humidity extremes, such as bathrooms, cellars, greenhouses, etc.
 - Places where the temperature is very low, such as inside a refrigerated area or in front of an air conditioner.
 - Places subject to steam or smoke (e.g. near heating or cooking surfaces).
 - Where noise generating devices such as dimmer switches or inverter electrical appliances are closeby.
 - Locations subject to frequent vibration or impact.



WARNING

- On devices with intercom, be sure to perform a call test with low audio volume on both intercom devices. A sudden call etc. may arrive causing for example damage to your ear.
- If the device does not operate properly, unplug the power supply.
- All devices which are not marked as weather-proof are designed for indoor use only. Do not use outdoor.
- On devices which are marked weather-proof: Do not spray with high-pressure water. Device issues could result.
- We do not assume any liability for damage to property or personal injury caused by improper use or the failure to observe the hazard information. In such cases, any claim under warranty ceases. For consequential damages, we assume no liability!

Safety instructions



- The device shall be used in compliance with local laws and regulations.
- Store the device in a dry and ventilated environment.
- Avoid exposing the device to shocks or heavy pressure.
- Do not install the device on unstable brackets, surfaces or walls. Make sure the material is strong enough to support the weight of the device.
- Use only applicable tools when installing the device. Using excessive force with tools could cause damage to the device.
- Do not use chemicals, caustic agents, or aerosol cleaners.
- Use a clean dry cloth for cleaning.
- Use only accessories that comply with technical specification of the device. These can be provided by Bird Home Automation GmbH.
- Use only spare parts provided by or recommended by Bird Home Automation GmbH.
- Do not attempt to repair the device by yourself. Contact Bird Home Automation GmbH for service matters.

- Keep the device more than 1 m (3.3') away from microwave, radio, TV, wireless router and any other wireless devices.
- On devices with intercom or built-in speaker or built-in microphone or signal transmission functions, keep the wires more than 30 cm (12") away from AC 100-240 V wiring. AC induced noise and/or device malfunction could result.
- Install the device in an area that will be accessible for future inspections, repairs and maintenance.
- If the device is used close to a cellular phone, the device may malfunction.
- The device can be damaged if dropped. Handle with care.
- The device turns inoperative during power failure.
- On devices with intercom or built-in speaker or built-in microphone, in areas where cellular or Radio / TV broadcasting station antennas are closeby, the device may be affected by radio frequency interference.
- On devices with LCD screen, it must be noted in advance that the LCD panel, though manufactured with very high precision techniques, inevitably will have a very small portion of its picture elements always lit or not lit at all. This is not considered a device malfunction.
- On devices with intercom, due to the environmental sound around the device, it may hinder smooth communication, but this is not a malfunction.
- On devices with Username/Password, the Username/Password to access the device is the customer's responsibility. Make sure to use password that cannot be easily guessed by a third party. We recommend that you change the Password on a regular basis.
- We will, under no circumstances, be liable for damage that occurs due to failures in power supply, network equipment or terminal devices; failures due to Internet providers and cellular network providers; failures such as disconnected lines and other losses in communication, which makes it impossible to provide this service as well as in any way delay this service due to any other causes outside of our responsibility; or if an error or missing data occurs during transmission.

Transportation



When transporting the device, use the original packaging or equivalent to prevent damage to the device.

Warranty Information

For information about the device warranty, see www.doorbird.com/warranty

COMPONENTS

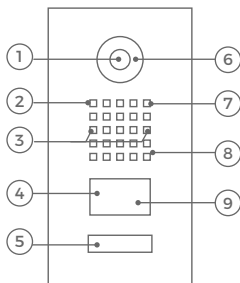
Package Contents

- 1x Main Electrical Unit
- 1x Front plate*
- 1x Mounting housing (backbox)*
- 1x Power supply unit (mains adaptor) with four country-specific adaptors
- 1x RFID card
- 1x RFID key fob
- 1x Screwdriver
- 1x Quickstart guide with Digital Passport
- 1x Installation manual
- 1x Small parts

*Only contained in certain models or configurations.

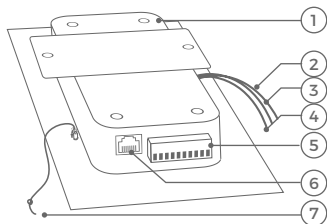
DEVICE EXAMPLE WITH 1 CALL BUTTON

Front



- 1) HDTV Video
- 2) Light Sensor
For night-vision mode
- 3) Security screws
- 4) Motion Sensor
- 5) Illuminated call button with nameplate
The illumination is also acting as Diagnostic LED(s).
- 6) Night Vision LEDs
- 7) Microphone
- 8) Loudspeaker
- 9) RFID Reader

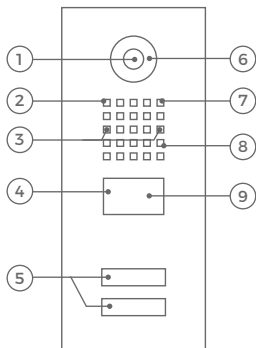
Inside



- 1) Main Electrical Unit
- 2) Yellow cable for call button
Connected to the illuminated call button with nameplate
- 3) Red cable for Module Port 1 (unused)
- 4) Green cable for Module Port 2 (unused)
- 5) Screw connection terminal
- 6) LAN/PoE jack
- 7) Nylon cord
To secure the front panel during assembly

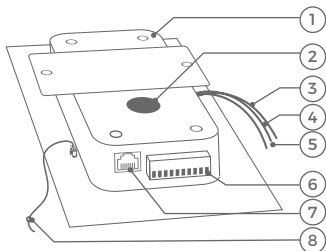
DEVICE EXAMPLE WITH 2 AND MORE CALL BUTTONS

Front

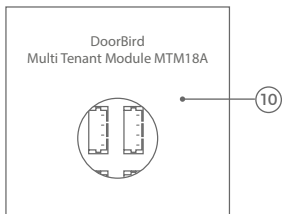
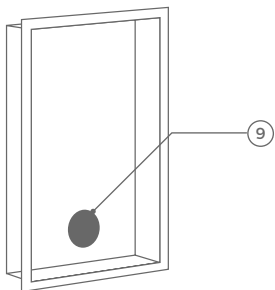


- 1) HDTV Video
- 2) Light Sensor
For night-vision mode
- 3) Security screws
- 4) Motion Sensor
- 5) Illuminated call buttons
with nameplate
The illumination is also acting
as Diagnostic LED(s).
- 6) Night Vision LEDs
- 7) Microphone
- 8) Loudspeaker
- 9) RFID Reader

Inside



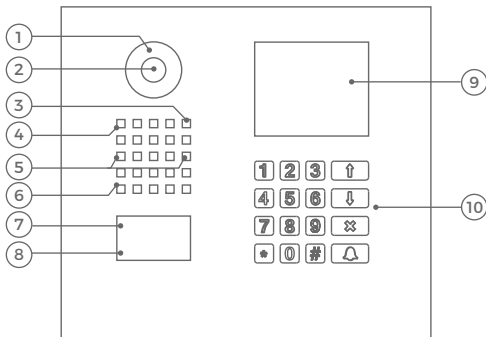
- 1) Main Electrical Unit
- 2) Velcro tape 1
To fix the Multi Tenant Module temporary on the Main Electrical Unit during assembly
- 3) Yellow cable for call button (unused)
- 4) Red cable for Module Port 1
Connected to Multi Tenant Module
- 5) Green cable for Module Port 2 (unused)
- 6) Screw connection terminal
- 7) LAN/PoE jack
- 8) Nylon cord
To secure the front panel during assembly
- 9) Velcro tape 2
To fix the Multi Tenant Module permanently on the front plate



- 10) DoorBird Multi Tenant Module MTM18A

DEVICE EXAMPLE WITH DISPLAY MODULE AND KEYPAD MODULE

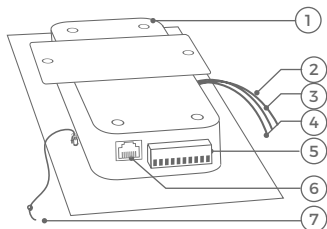
Front



- 1) Night Vision LEDs
- 2) HDTV Video
- 3) Microphone
- 4) Light Sensor
For night-vision mode
- 5) Security screws
- 6) Loudspeaker

- 7) RFID Reader
- 8) Motion Sensor
- 9) Display Module
- 10) Keypad Module
The illumination is also acting as
Diagnostic LED(s)

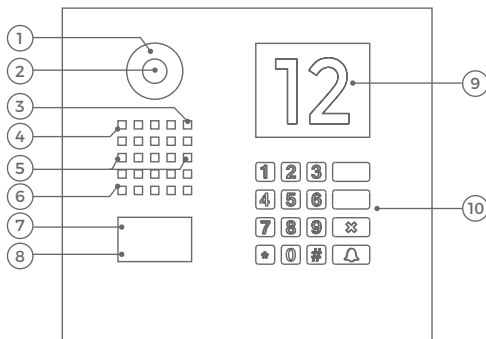
Inside



- 1) Main Electrical Unit
- 2) Yellow cable for call button
(unused)
- 3) Red cable for Module Port 1
Connected to the Keypad Module
- 4) Green cable for Module Port 2
Connected to the Display Module
- 5) Screw connection terminal
- 6) LAN/PoE jack
- 7) Nylon cord
To secure the front panel during
assembly

DEVICE EXAMPLE WITH INFO MODULE AND KEYPAD MODULE

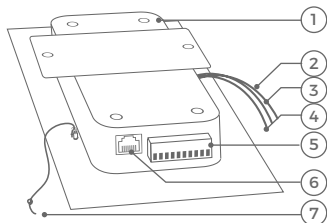
Front



- 1) Night Vision LEDs
- 2) HDTV Video
- 3) Microphone
- 4) Light Sensor
For night-vision mode
- 5) Security screws
- 6) Loudspeaker

- 7) RFID Reader
- 8) Motion Sensor
- 9) Info Module
- 10) Keypad Module
The illumination is also acting as
Diagnostic LED(s)

Inside



- 1) Main Electrical Unit
- 2) Yellow cable for call button (unused)
- 3) Red cable for Module Port 1
Connected to the Keypad Module
- 4) Green cable for Module Port 2
Connected to the Info Module
- 5) Screw connection terminal
- 6) LAN/PoE jack
- 7) Nylon cord
To secure the front panel during assembly

VIDEOS

Need help with the installation? Be sure to watch our installation videos which can be found on <http://www.doorbird.com/support>
Each individual step of the installation is clearly documented in the videos.

INSTALLATION

All the steps below should be carried out carefully by a competent adult, taking into consideration any applicable safety regulations. Please contact us directly or seek the advice of a competent specialist.

Please ensure that all wires used for the installation are undamaged along their entire length and approved for this type of use.

Network speed and network components

Please ensure that the upload speed of your Internet connection is at least 0.5 Mbps. You can also carry out a speed test at any time via the DoorBird App. The user experience is only as good as your network speed, network stability and quality of your network components, such as your Internet Router and WiFi access points or WiFi repeaters. Please also make sure that your network components are no older than two years old, have been manufactured by a well-known manufacturer, and have the latest firmware installed.

Should these requirements not be fulfilled, it may occur, for example that the performance of audio and video is poor or push notifications are delayed or do not arrive on your smartphone or tablet at all.

High-speed Internet (via landline): DSL, cable or optical fibre
Network: Ethernet, with DHCP

STEP 1: SWITCHING OFF POWER



Switch off the power to all wires leading to the assembly location, i.e. the door chime, electric door opener, power supply unit for the video door station etc.

STEP 2: DISMANTLING THE EXISTING DOORBELL

Should there already be a doorbell or door station on the exterior wall of the house, please dismantle it.

STEP 3: DETERMINING THE ASSEMBLY LOCATION

The device uses an ultra wide-angle hemispheric lens so that even when the person is a minimum distance of 50 cm (19.68 in) away from the device, a low installation height is sufficient. The lens is therefore not mechanically adjustable. The camera lens should be located at an altitude of at least 125 cm (49.22 in). You may check this prior to the final mounting.

When choosing the assembly location, consider the lighting conditions. Avoid direct sunlight, direct backlight and reflective surfaces.



Do not expose the device to direct sunlight. The housing temperature can exceed the maximum allowed temperature limit. This can result in damage of electric and mechanic components of the device and injuries especially when touching exterior parts of the device. White and bright silver-colored front plates absorb less sunlight than dark ones.



An image sensor must not be exposed to direct sunlight for an extended period of time. Direct sunlight will “blind” the camera and may permanently bleach the small color filters on the image sensor chip.



Any defects caused by direct sunlight is not covered by warranty.

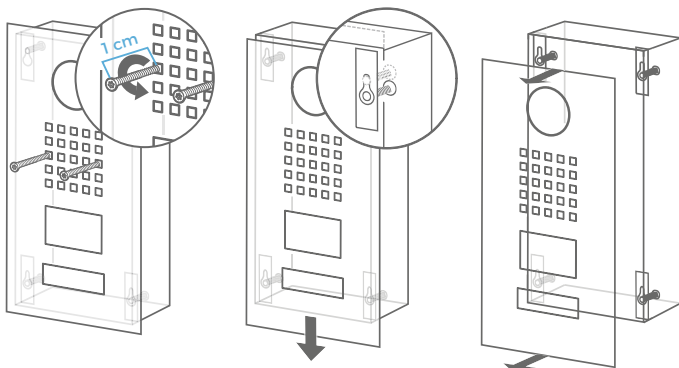
The network cable between the device and the PoE-Switch/PoE-Injector/Internet Router can have a maximum length of 80 meters/262 feet (IEEE 802.3).



If you have only two wires available at the assembly location, you may use of the “DoorBird 2-Wire Ethernet PoE Converter A1071”, sold separately. It allows you to transfer network data (Ethernet) and power (PoE) with a simple two-wire cable over long distances. For example; existing buildings with a simple two-wire bell wire can be equipped with network technology without having to retrofit any network cables.

STEP 4: REMOVING THE FRONT PLATE

Remove the front plate carefully using the screw driver provided with the device from the mounting housing (backbox).



1.) Turn out the security screws for 1 cm

2.) Pull down the front panel.

3.) Pull the front panel towards you.

STEP 5: ASSEMBLING THE MOUNTING HOUSING

Assemble the mounting housing (backbox) to the wall. You can find detailed drawings and measurements of the device in the corresponding datasheet of the device.



If you must drill holes in a wall, insert screws into a wall or lever up a wall, ensure that no cables or mains (gas, water, etc.) are to be found in the wall..

STEP 6: POWER SUPPLY OPTIONS

The device can be powered using the power-supply unit (mains adaptor) supplied with it (Option 1) or via PoE (Power over Ethernet) using a network cable (Option 2). The device can be alternatively also be supplied with power using a DIN-rail power supply unit that you can obtain directly from us. The device does not use battery power.

Option 1: Power supply using the power-supply unit (mains adaptor)

The power supply unit (mains adaptor) supplied with the device has a 300 cm long cable with two insulated wires.



Do not plug the power supply unit into the wall socket yet. Only use the power supply unit provided along with the device, or a DIN-rail power supply unit that you can obtain from us separately, since this has been specially stabilized electrically and is equipped with an integrated audio interference reduction device. Other power supply units may destroy the device or cause poor transmission quality. The warranty expires automatically if you use a different power supply unit.

Option 2: Power supply via PoE

To power the device via a PoE-Switch (e.g. D-Link DGS-1008P) or PoE-Injector (e.g. DoorBird Gigabit PoE Injector A1091) in accordance with the PoE standard IEEE 802.3af Mode A, the four wires bearing the numbers 1, 2, 3 and 6 of a Cat.5 cable or better are to be used. A Cat.5 cable or better must be used as network signals can only be transmitted over completely insulated, shielded and twisted cables. If you use PoE as a source of power the four wires for PoE then simultaneously form the data link. The device won't start if your PoE-Switch/PoE-Injector does not support the PoE Standard IEEE 802.3af Mode A (see Diagnostic-LED and Diagnostic-Sounds).



1. Disconnect the PoE-Switch or PoE-Injector from the power grid.
2. Run the network cable to the installation location of the device.

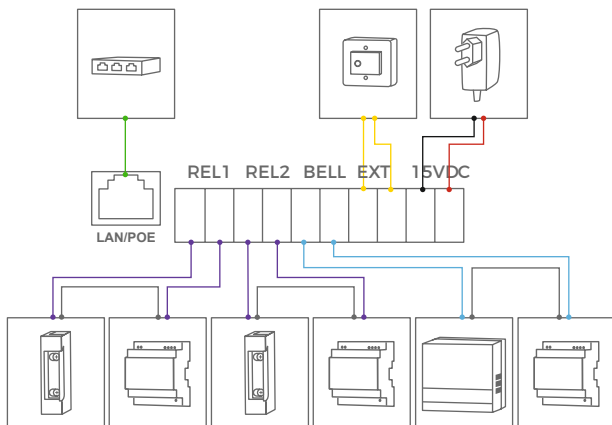
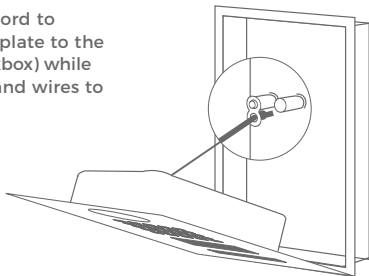
STEP 7: CONNECTING THE DEVICE

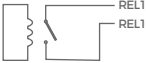
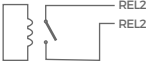
It is possible to connect the cables and wires to the device conveniently and safely via labelled connection ports. You can connect all necessary cables and wires to the device now. Please remove any cables and wires from the connection ports of the device that you do not need. Remove about 5 mm of insulation material at the end of the wires that you would like to connect to the green screw connection terminal of the device.



Handle the front plate with care. The surface of the front plate could be scratched or otherwise damaged if handled without care.

You can use the nylon cord to temporary fix the front plate to the mounting housing (backbox) while connecting the cables and wires to the device.



PORT	DESCRIPTION
LAN/POE	<p>RJ45 jack to connect a standard Network cable Cat.5 or better, coming from the Internet Router/PoE-Switch/PoE-Injector.</p> <p>NOTICE Do not power the device simultaneously via the power supply from the power supply unit (mains adaptor) and the power supply via PoE.</p>
<p>REL1, REL1</p> 	<p>Bi-stable latching relay #1, max. 1-24 V DC/V AC, 1 Ampere. Security feature: The relay keeps its state even in the case of loss of power. You can configure the default state of the relay (open/close) via the DoorBird App. These ports can be used to connect e.g. an electric door opener. The device does not supply power to the connected device. The power supply for the electric door opener must be installed separately.</p> <p>i When wiring an electric door opener directly to a door station, there is a risk that the electric door opener could be tampered by unauthorized third parties (e. g. by breaking the door station and short-circuiting the wiring of the door opener). Therefore, we generally recommend the use of a remote safety relay mounted indoors (e. g. DoorBird I/O Door Controller A1081) for wiring an electric door opener for a more secure installation in your home.</p>
<p>REL2, REL2</p> 	<p>Bi-stable latching relay #2, max. 1-24 V DC/V AC, 1 Ampere. Security feature: The relay keeps its state even in the case of loss of power. You can configure the default state of the relay (open/close) via the DoorBird App. These ports can be used to connect e.g. an electric door opener. The device does not supply power to the connected device. The power supply for the electric door opener must be installed separately.</p> <p>i When wiring an electric door opener directly to a door station, there is a risk that the electric door opener could be tampered by unauthorized third parties (e. g. by breaking</p>

the door station and short-circuiting the wiring of the door opener). Therefore, we generally recommend the use of a remote safety relay mounted indoors (e. g. DoorBird I/O Door Controller A1081) for wiring an electric door opener for a more secure installation in your home.

BELL, BELL



We offer feature-rich IP door chimes (e.g. DoorBird A1061W), which can be securely connected via your network (LAN / WIFI / WAN) to this device. Alternatively you can connect a conventional door chime using this relay contact.



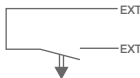
This relay contact is only relevant for devices with just one call button.

Switching relay, max. 1-24 V DC/V AC, 1 Ampere. The relay contact can be used to connect a conventional door chime. The device does not supply power to the connected door chime. The power supply for the door chime must be installed separately. Should you have any questions, please contact the manufacturer of your door chime. You can find compatible door chimes at www.doorbird.com/support



Some door chimes operate with 110-240 V DC/V AC. Do not connect such door chimes to this relay contact. The device is immediately destroyed and life-threatening injuries can occur.

EXT, EXT



Door opener button, max. 0 V DC/V AC, 0 Ampere. These ports can be used to connect e.g. a door opener button inside the home. It will trigger the first bi-stable latching relay of the device (REL1, REL1).



Please make sure to add no voltage on these ports. Extra voltage may destroy the device immediately.

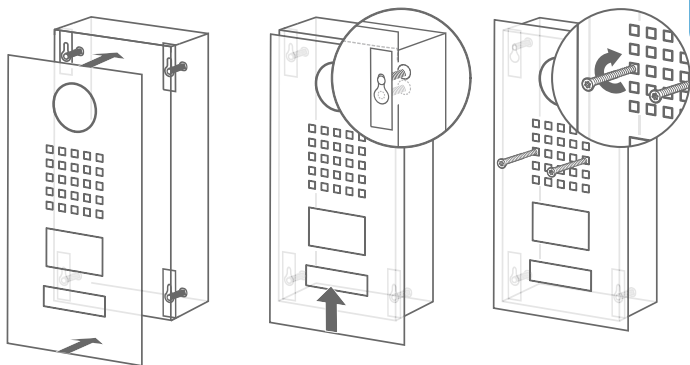
15 VDC -	<p>15 V DC Power supply input, negative pole (-). Please connect the black wire of the power supply unit (mains adaptor) supplied with the device here, if you do not power the device using PoE.</p> <p>NOTICE Do not power the device simultaneously via the power supply from the power supply unit (mains adaptor) and the power supply via PoE.</p>
15 VDC +	<p>15 V DC Power supply input, positive pole (+). Please connect the red wire of the power supply unit (mains adaptor) supplied with the device here, if you do not power the device using PoE.</p> <p>NOTICE Do not power the device simultaneously via the power supply from the power supply unit (mains adaptor) and the power supply via PoE.</p>

NOTICE Please take care when connecting the cables and wires. Connecting the cables and wires the wrong way may damage the device. Wires without insulation material must not protrude out of the green screw connection terminal, it may lead to electrical short and damage the device.

NOTICE The yellow, green, and red cables that lead out from the side of the Main Electrical Unit must only be used to connect components certified by Bird Home Automation.

STEP 8: ASSEMBLING THE FRONT PLATE

Assemble the front plate of the device to the mounting housing (backbox) of the device.



- 1.) Pull the front panel into the mounting housing (backbox)
- 2.) Push the front panel up.
- 3.) Insert the security screws.

STEP 9: ACTIVATING THE DEVICE

Switch on the power leading to the assembly location again. If you use PoE, make sure to switch on power of the PoE-Switch or PoE-Injector you have connected the device to.

NOTICE Do not power the device simultaneously via the power supply from the power supply unit (mains adaptor) and the power supply via PoE.

You can see if the device is powered by checking the Diagnostic-LED, which lights up after about 30 to 60 seconds after the power is connected. The device is ready for operation (booting up process, any software updates, etc.) once it has emitted a short diagnosis sound from the integrated loudspeaker. This may last for up to 5 minutes. Should you not hear a sound, please check the power supply. Please also check whether you have used a wall-plug power supply and not PoE and whether you have connected the positive pole and negative pole to the device correctly.

STEP 10: DOWNLOADING AND INSTALLING THE APP

Download the “DoorBird” App by Bird Home Automation onto your mobile device from the Apple App Store or Google Play Store. You can always find the most up-to-date version of the App manual on www.doorbird.com/support. Go to DoorBird App “Settings > Add device” and click on the QR code icon in the “User” field. Scan the user QR code found on the “Digital Passport” provided with the device.

If you have problems adding the device to the App please check if the device is online (www.doorbird.com/checkonline). If the device is not online, please check the network connection and the power supply of the device.

DIAGNOSTIC-LED

You can see if the device is powered by checking the Diagnostic-LED, which lights up after about 30 to 60 seconds after the power is connected.

DIAGNOSTIC-SOUNDS

After around one to five minutes, the device emits brief diagnostic sounds after it has been connected to the power grid.

MOTION SENSOR

The device has a built-in Motion Sensor with 4D Technology. You can use it for numerous applications, e. g. to send an alarm to a mobile device or to switch a relay to turn on an outdoor light.

RFID READER

The built-in RFID reader can be used for many applications, e.g. to open/lock doors or arming/disarming your alarm system. For security reasons, the RFID reader has a very short range (0 - 3 cm, 0 - 1.18 in), so you must place the compatible RFID tag (card, key fob) very close to the RFID reader. You can configure the RFID reader using the DoorBird App.



The RFID reader works only on short distance, for security reasons.

API

The device features a well documented API for third-party integration. For information, terms and conditions see www.doorbird.com/api

DOORBIRD CONNECT

The device features many options to integrate it into third-party applications. For information, terms and conditions see www.doorbird.com/connect

CHANGING THE LABEL OF A CALL BUTTON NAMEPLATE



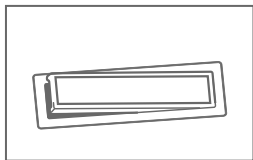
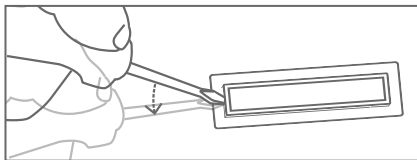
Applies only to devices with 1 and more illuminated call buttons with nameplate.



Engraving Service

Engraving service for a modern and clean appearance:
www.doorbird.com/engraving

Please follow STEP 1 to switch off power. We recommend to use a thin slot screwdriver to remove the cover of the nameplate. We recommend to use white paper for the label which does not absorb moisture.



CHANGING THE LABEL OF THE INFO MODULE



Applies only to devices with Info Module.

Please follow STEP 1 to switch off power and STEP 2 to open the device. You can then change the labeling of the Info Module in the inside. We recommend to use white paper for the label which does not absorb moisture.

CONNECTING CALL BUTTONS TO THE MULTI TENANT MODULE

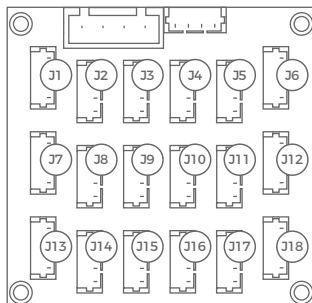


Applies only to devices with 2 and more illuminated call buttons with nameplate.

Connect only call buttons to the Multi Tenant Module (e.g. Multi Tenant Module MTM18A) certified by Bird Home Automation.

J1 = 1. call button jack

J18 = 18. call button jack



TECHNICAL SPECIFICATIONS

GENERAL

Power supply:

15 V DC or Power over Ethernet (PoE 802.3af Mode-A)

Info Module*:

3.5", illuminated

Display Module*:

3.5" LCD (no touch function), illuminated

Keypad Module*:

16 keys, illuminated, configurable via app, e.g.

- Individual PIN codes
- Individual events (e.g. switch a relay, push notification, SIP call [audio/video], HTTP(s) notification)
- Individual schedules

Connectors:

- RJ45, for LAN/PoE
- Bi-stable latching relay #1, max. 1-24 V DC/V AC, 1 Ampere, e.g. for electric door opener
- Bi-stable latching relay #2, max. 1-24 V DC/V AC, 1 Ampere, e.g. for electric door opener
- Switch relay, max. 1-24 V DC / V AC, 1 ampere, e.g. for conventional door chime
- External input (potential-free), for external door opener button
- 15 V DC input (+, -)

Weather-proof:

Yes, IP65

Approvals:

CE, IC, FCC, RoHS, IP65

Operating conditions:

-25 to 55°C / -13 to 131°F

Humidity 10 to 85 % RH (non condensing)

Scope of delivery:

- 1 x Main Electrical Unit
- 1 x Front panel*
- 1 x Mounting housing (backbox)*
- 1 x Power supply unit (mains adaptor) with four country-specific adaptors (110 - 240 V AC to 15 V DC)
- 1 x RFID key fob
- 1 x RFID card
- 1 x Small parts
- 1 x Installation manual

Warranty:

see www.doorbird.com/warranty

CURRENT SYSTEM REQUIREMENTS

System requirements:

Mobile Device: Newest iOS on iPhone/iPad, newest Android on Smartphone/Tablet

Internet: High-Speed Landline Broadband Internet connection, DSL, Cable or fiber optic, no socks or Proxy server

Network: Ethernet Network, with DHCP

Recommended installation height:

Camera lens should be at a min. height of 125 cm (49 in)

VIDEO

Camera:

HDTV 720p, dynamic (VGA - HDTV)

Lens:

High-end ultra wide-angle hemispheric lens 180° horizontal, 90° vertical, straightened, IR-capable

Night-vision:

Yes, light sensor, automatic IR-cut filter, 12 IR-LEDs (850 nm)

AUDIO**Audio components:**

Speaker and microphone, echo and noise cancellation (AEC, ANR)

Audio streaming:

Two-way, full duplex

NETWORK**Ethernet:**

RJ45 jack, PoE 802.3af Mode-A

MOTION SENSOR**Type:**

Active

Detection angle:

110°

Range:

1 - 10 m (3.3 - 32.9 ft), depends on environment, configurable in 1 m (3.3 ft) steps.

If a "Display Module" is connected to the Main Electrical Unit, the range is limited to 1 m (3.3 ft).

Technology:

4D. Based on multiple integrated sensors and algorithms, e.g. Radio Frequency Energy (RFE)

Configuration:

Via App, e.g.

- Range (1.10 m / 3.3 - 32.9 ft)
- Movement direction (coming, leaving, both)

- Individual events (e.g. switch a relay, push notification, SIP call [audio/video], HTTP(s) notification)
- Individual schedules

Type:

Active Reader Passive Tag (ARPT) system

Standard:

ISO/IEC 18000-2:2009 Part 2

Frequency:

125 KHz

Range:

0 - 3 cm, depends on environment

Antenna:

Internal

Compatible Transponder:

Sold separately,

see www.doorbird.com/buy

Configuration:

Via app, e.g.

- Tag (add, delete)
- Individual events (e.g. switch a relay, push notification, SIP call [audio/video], HTTP(s) notification)
- Individual schedules

INTEGRATED WIRELESS MODULES**RFID:**

125 KHz

Sensor:

26 GHz, can be disabled

OPTIONAL ACCESSORIES**Sold separately:**

see www.doorbird.com/buy

*: Only contained in certain models or configurations.

LEGAL NOTES

General remarks

1. DoorBird is a registered trademark of Bird Home Automation GmbH.

2. Apple, the Apple logo, Mac, Mac OS, Macintosh, iPad, Multi-Touch, iOS, iPhone and iPod touch are trademarks of Apple Inc.

3. Google, Android and Google Play are trademarks of Google, Inc.

4. The Bluetooth® word mark and logos are registered trademarks of Bluetooth SIG, Inc.

5. All other company and product names may be trademarks of the respective companies with which they are associated.

6. We reserve the right to make changes to our products in the interests of technical advancement. The products shown may also look different from the products supplied based on ongoing enhancement.

7. Reproducing or using texts, illustrations and photos from this instruction manual in any media – even if only in the form of excerpts – shall only be permitted with our express written consent.

8. The design of this manual is subject to copyright protection. We do not accept any liability for any errors or any erroneous content or printing errors (even in the case of technical specifications or within graphics and technical sketches).

9. Our products are in compliance with all technical guidelines, electrical and telecommunications regulations applicable in Germany, the EU and the USA.

Data privacy and data security

1. For maximum security, the device uses the same encryption technologies as are used in online banking. For your security, no port forwarding or DynDNS is used either.

2. The data centre location for remote access over the Internet by means of an App is obligatory in the EU if the determined Internet IP-Address location of the device is within the EU. The data centre is operated in line with the most stringent security standards.

3. Video, audio and any other surveillance methods can be regulated by laws that vary from country to country. Check the laws in your local region before installing and using this device for surveillance purposes.

If the device is a door-, indoor station or camera:

- In many countries video and voice signal may only be transmitted once a visitor has rung the bell (data privacy, configurable in the App).
- Please carry out the mounting in such a way that the detection range of the camera limits the device exclusively to the immediate entrance area.
- The device may come with a visitor history and motion sensor. You can activate/deactivate this function if required.

If necessary, indicate the presence of the device in a suitable place and in a suitable form.

Please observe any relevant country-specific statutory regulations concerning the use of surveillance components and surveillance cameras applicable at the installation site.

Instructions for disposal

Do not dispose of the device with regular domestic waste. Electronic equipment must be disposed e.g. at local collection points for waste electronic equipment in compliance with the Waste Electrical and Electronic Equipment Directive.

Publisher
Bird Home Automation GmbH
Joachimsthaler Str. 12
10719 Berlin
Germany

Web: www.doorbird.com
Email: hello@doorbird.com