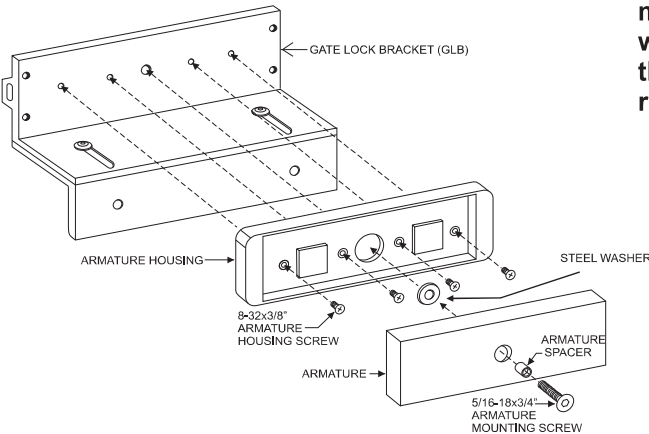


**MOUNTING PREPARATION**

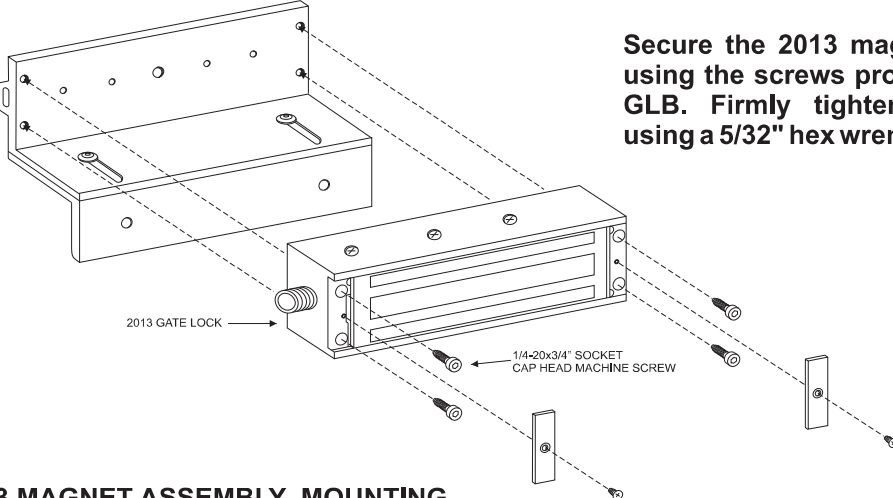
**1. DETERMINE THE PREFERRED MOUNTING CONFIGURATION**

From the illustrations below determine whether the Gate Lock Bracket will be used to mount the #2513 armature or magnet assembly. Select the hardware indicated and follow the specific instructions to mount the desired component.

**2013 ARMATURE MOUNTING**



**Firmly tighten the armature mounting screw with a 3/16" hex wrench. Failure to properly secure the armature to the bracket could result in serious injury or a possible**



**Secure the 2013 magnet assembly using the screws provided with the GLB. Firmly tighten the screws using a 5/32" hex wrench.**

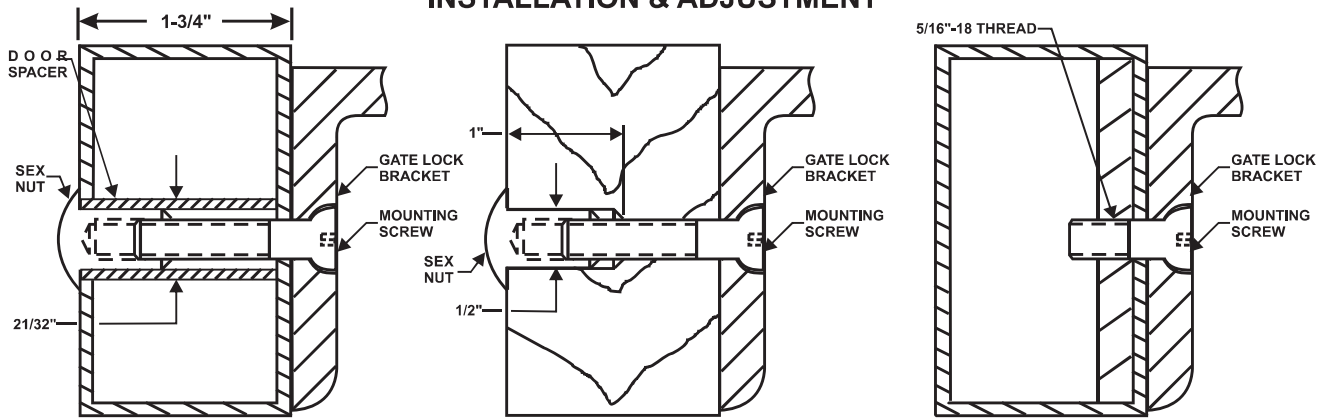
**2013 MAGNET ASSEMBLY MOUNTING**

**2. PREPARE THE GATE FOR MOUNTING THE BRACKET**

From the three illustrations on the top of page 6 select the one that resembles your gate type and follow the instructions for drilling the mounting screw holes.

**\*\* The Gate Lock Bracket is an option that is not included in the standard 2013 lock**

## INSTALLATION & ADJUSTMENT



### HOLLOW TUBE GATE

Drill an  $1\frac{1}{32}$ " diameter hole through gate. From sex nut side only enlarge the  $1\frac{1}{32}$ " hole to  $2\frac{1}{32}$ " diameter.

### SOLID CORE GATE

Drill an  $1\frac{1}{32}$ " diameter hole through gate. From sex nut side only drill  $\frac{1}{2}$ " diameter hole to  $1$ " depth.

### REINFORCED TUBE GATE

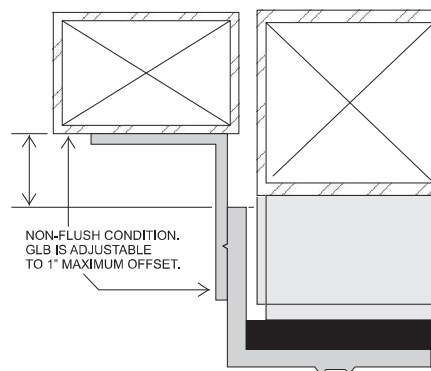
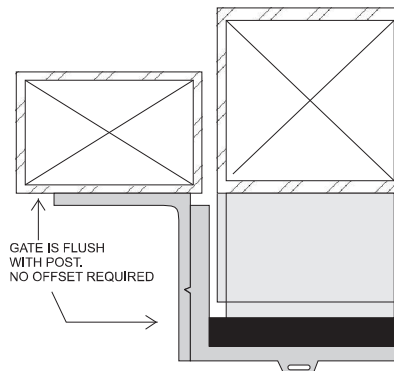
Drill an  $1\frac{7}{64}$ " diameter hole and tap for  $5/16$ "-18 thread.

## 3. ADJUSTING THE BRACKET

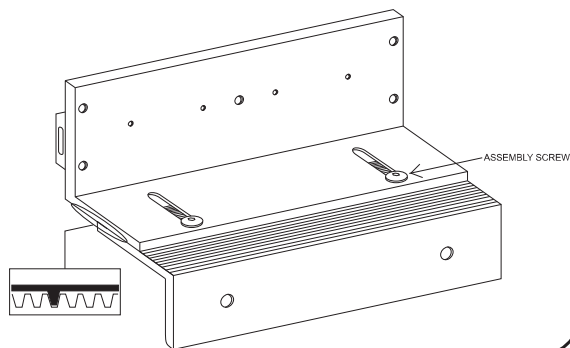
If necessary the Gate Lock Bracket may be adjusted to compensate for unusual clearance and offset conditions on the gate assembly (Refer to Figure "A"). Adjust the bracket as follows:

- a. Using the  $5/32$ " hex wrench provided loosen the two bracket assembly screws two (2) full turns each.
- b. Slide the two halves of the bracket apart as required. Align the locking rib on the bottom of the upper half with a matching groove on the lower half (Refer to Figure "B")
- c. Firmly re-tighten the assembly screws, verify proper gate and lock alignment and operation and re-adjust as necessary.

**Figure "A"**



**Figure "B" ADJUSTING THE GLB**



**\*\* The Gate Lock Bracket is an option that is not included in the standard 2013 lock**

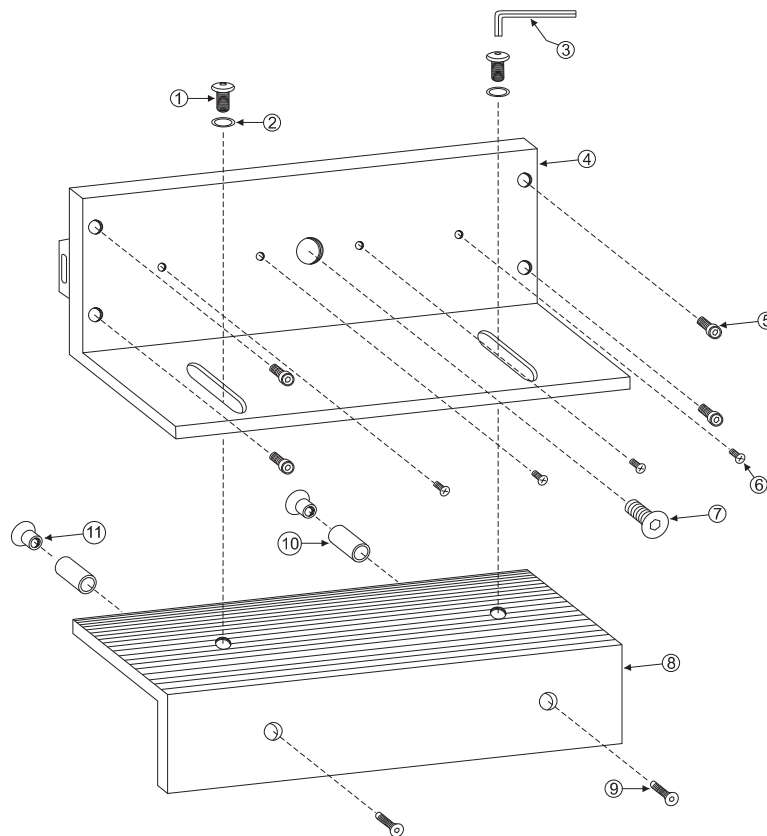
## GATELOCK BRACKET BILL OF MATERIAL

- 1 - Mounting Instructions
- 1 - Gate Lock Bracket Assembly
- 1 - Hardware Kit consisting of:
  - 4 - 1/4-20 x 3/4" socket cap head machine screws ( Gate Lock Mtg. Screws )
  - 1 - 5/16-18 x 3/4" hex flat head machine screw ( Armature Mtg. Screw )
  - 1 - 5/32" Hex Wrench
- 2 - Mounting Bolt Assemblies, each consisting of:
  - 1 - 5/16-18 x 1-3/4" hex flat head machine screw
  - 1 - 5/16-18 Sex Nut
  - 1 - 1-11/16" long Door Spacer

## TOOLS REQUIRED

- 1 - Electric Drill
- 1 - 3/16" Hex Wrench
- 1 - 11/32" Drill Bit
- 1 - 21/32" Drill Bit
- 1 - 1/2" Drill Bit
- 1 - 17/64" Drill Bit
- 1 - Hammer
- 1 - Center Punch
- 1 - Pencil

**\*\* The Gate Lock Bracket is an option that is not included in the standard 2013 lock**



### DESCRIPTION

- 1. Assembly Screw
- 2. Lock Washer
- 3. Hex Wrench
- 4. Upper Bracket (300736)
- 5. Lock Mtg. Screw
- 6. Armature Housing Mtg. Screw
- 7. Armature Mounting Screw
- 8. Lower Bracket (300737)
- 9. Mounting Screw
- 10. Door Spacer
- 11. Sex Nut

## GATE LOCK BRACKET EXPLODED VIEW